



REPUBLIC OF GHANA

MINISTRY OF FINANCE

GA

**MANƆSOMƆ NITSUMƆ HE NI KWED SHIKA GBEJIANƆTOO NO
GREEN CLIMATE FUND
JEN ENƆLIFEEMƆ FOTRO**

**NATIONAL DESIGNATED AUTHORITY (NDA)
MAN NITSUMƆ HE NI AHA LE HEGBE
REVISED OPERATIONAL MANUAL
NITSUMƆ GBEJIANƆTOO WOLO
ABRIDGED VERSION
NI ADOO NO**

March 2020
Otsokrikri 2020



REPUBLIC OF GHANA
MINISTRY OF FINANCE

MAŊSƆƆMƆ NITSUMƆ HE NI KWED SHIKA GBEJIANƆTOO NO

GREEN CLIMATE FUND

JEN ENƆLIFEEMƆ FOTRO

NATIONAL DESIGNATED AUTHORITY (NDA)

MAŊ NITSUMƆ HE NI AHA LE HEGBE

REVISED OPERATIONAL MANUAL

NITSUMƆ GBEJIANƆTOO WOLO

ABRIDGED VERSION

NI ADOO NO

March 2020
Otsokrikri 2020



GREEN
CLIMATI
FUND



1.0 INTRODUCTION MLIBOTEMO

Overview of the Green Climate Fund Hiεgbelema yε Jεη Eηλifeema Fotro Iε He

Jεη Eηλifeema Fotro ni ji the Green Climate Fund (GCF) Iε, eji jεη jεη fotro ko ni ato, ni yoo Jεη Kwamaη Ku Iε gbene ko ni gbεi ji United Nations Framework Convention on Climate Change (UNFCCC) Iε shishi, koni amεke shika awo nifeemai sratoi amli keku jεη tsakemai anaagbai ke kooyooηmujiwoo ni fiteo kooyooη babao ni ke naagbai baa Iε naa, keha ni jεη ke kooyoo mli atse, ni eηmεgbε keha noyaa ke shweremo. Ato fotro nεε keyebua maji ni sheko hie tso Iε, ni amenye amεke nifeemai sratoi ni baaye ebua adamo jεηtsakemai ke kooyooηmujiwoo nibii ni fiteo kooyooη ni ke naagbai baa Iε anaa, koni no awo amemaji Iε hewale ni amenye ameto ηai, ke gbεjianotai sratoi ni baaye ebua amε, ni amenine ashe fotro shikai nεε ke amenokwemo kpakpa no ke nitsumo ye jεηtsakemai ahe. GCF fotro nεε, akewaa aηkro aηkro nitsumohei (private sector) anitsumai ni miiya no ye jεηtsakemai ke kooyooηmujiwoo shibaa gbεjianotai sratoi ye ηεlei sratoi fεε ano. Oti Iε ji ake, anye ajara shika ni boteo nitsumai nεε amli Iε pεpεεpe aha kooyooηmujiwoo shibaa ke jεηtsakemai anifeemai sratoi Iε, titri Iε ye maji ni naagbai nεε baanye anina amε Iε. No hewo Iε GCF gbeleo gbε ehaa maji ni amεdieηtse amenine anye ashe fotro nεε mli shika Iε eko no, ni ewa nakai maji ni efee kralo Iε loo amεsaa amεhe keha amro nifeemai ni baawa ni maji Iε ana hewale ye fotro Iε no Iε.

Meni ji otii ni Fotro nɛɛ hiɛ?

Jɛŋ Ɛŋɔlifeemɔ Fotro nɛɛ miitaɔ ni:

- Maji ni shɛko hiɛ tsɔ lɛ aba koo kɛ koohai ni ashaa akɛwoɔ lasu ni woɔ kɔɔyɔɔŋ muji lɛ shi, ni amɛto gbei krokomei, kɛdamɔ jɛŋtsakemɔi anaagbai ni ekebaa lɛ naa.
- Ashiɛ tsakemɔ yɛ hei srɔtoi ni baaha kɔɔyɔɔŋmujiwoo nifeemɔi lɛ aba shi, ni akɛtiu kɔɔyɔɔŋ-mlitsemɔ kɛ hiɛyaa kɛ shweremɔ gbei asɛɛ.
- Akɛwo manɓii kɛ aŋkro aŋkroi anitsumɔi kɛ nitsumɔi ni bɛ amralofoi ashishi lɛ hewalɛ ni amɛnyɛ amɛnine ashɛ jɛŋtsakemɔ fotro nɛɛ mli shika lɛ eko nɔ.
- Akɛtsiɛ mɛi, kɛ nitsumɔi kɛ adebɔɔ nibii ni jɛŋtsakemɔ naagbai nɛɛ eha amɛgbegbee shi lɛ ahie ekonɔŋ yɛ maji ni shɛko hiɛ tsɔ lɛ amlɛ.
- Akɛshiɛ tsakemɔi ni baaha mɛi awii amɛhe kɛjɛ kɔɔyɔɔŋmujiwoo he, ni akɛtui gbei anɔ ni abaatsɔ ni kɛ nɔyaa kɛ shweremɔ mon baaba sɛɛ.
- Akɛpia gbeekpaamɔ ni aba yɛ Paris lɛ ni etsu nii, ni agbɛnɛ hu akɛpia Jɛŋ Kwamanɔ Ku lɛ Gbejiano ni ato yɛ jɛŋtsakemɔ he lɛ, ni ji: United Nations Framework Convention on Climate Change (UNFCCC) lɛ shika nifeemɔi gbɛjianoɔtoi ni eba yɛ jɛŋtsakemɔ he lɛ fɛɛ.

Bɔ ni baafeɛ ni nine ashɛ GCF Fotro lɛ mli shika lɛ eko nɔ

Nitsumɔ hei kɛ kui srɔtoi (kɛjɛ aŋkro aŋkro nitsulɔi, nɔyaa kɛ shweremɔ nitsumɔ hei, manɔ shikatoohɛi, aahu kɛyagbee nitsumɔ hei ni bɛ amralofoi ashishi(NGOs) yɛ ŋɛlɛi srɔtoi fɛɛ anɔ (maji maji, kpokpai kɛ akrowai bibii fɛɛ) nine anyɛ ashɛ GCF fotro shika nɛɛ eko nɔ kɛha amekutsei ni amɛyɔɔ mli lɛ

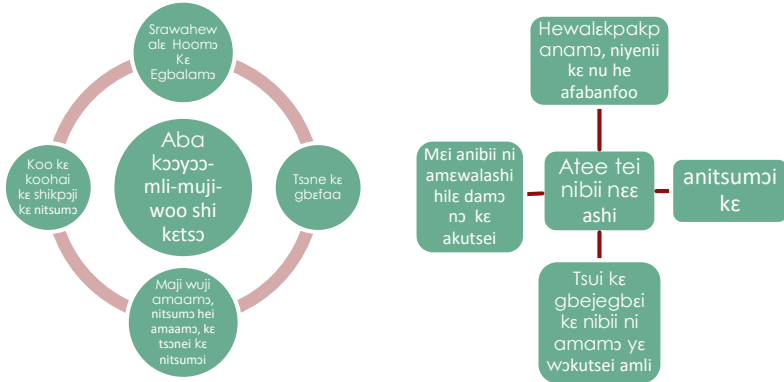
nitsumɔi kɛ amɛmli nifeemɔi ni kɛ tsakemɔi ni baaha kɔɔyɔɔŋmujiwoo lɛ abashi yɛ maji ni shɛko hiɛ lɛ amlɪ.

GCF Shika Ni Akɛhaa Mɔ Diɛntɛ ni Etsɔɔ Mɔ Kroko Dɛŋ

Shika ni akɛhaa mɔ diɛntɛ ni etsɔɔ mɔ kroko dɛŋ lɛ ji oti wulu ko ni ka Jɛŋ Eŋɔlifeemɔ Fotro lɛ tsui nɔ jogbaŋŋ. Eshishitsɔɔmɔ ji akɛ, maji ni baana nɛke fotro nɛɛ mli shika nɛɛ eko lɛ, baanyɛ afamɔ kui loo nitsumɔhei ni he ekpɔ jogbaŋŋ tamɔ (maŋ-nitsumɔhei, aŋkro aŋkro nitsumɔhei loo nitsumɔhe ko ni bɛ amralofoi ashishi) ni amɛŋɔ GCF shika lɛ yɛ amɛnajan, ni shika lɛ eyatsɔɔ tɛŋdamɔɔ ko kwraa nine nɔ. Shika ni akɛhaa mɔ diɛntɛ lɛ waa maŋ ni enaa shika lɛ nɔ hewalɛ jogbaŋŋ; ni ekwɛɔ nɔ jogbaŋŋ hu, ni ehaa shika lɛ kɛ nitsumɔ fɛɔ faŋŋ ni atsimɔɔ nɔ ko nɔ; ewaa hu ni akɛ shika lɛ tsuo nii jogbaŋŋ ni ehaa maji ni nine shɛɔ shika nɛɛ eko nɔ lɛ, nyɛɔ amɛbuɔ shika lɛ he akɔntaa kpakpa. Shika ni akɛhaa mɔ diɛntɛ kɛtsɔɔ maŋ-nitsumɔhe ko loo aŋkro aŋkro nitsumɔhe ko nɔ lɛ ji oti wulu ko yɛ GCF fotro nɛɛ mli, ni haa maji lɛ naa shika lɛ nɔ hewalɛ.

GCF Gbɛkpamɔi Kɛ Maji Ashweenii Yɛ Jɛŋtsakemɔi Ahe

GCF yɔsɛɔ hei kpaanyɔ ni kɛ akɛ GCF shika wo lɛ amɛhe baaba sɛɛnamɔ jogbaŋŋ. Kɛji aato GCF nitsumɔ ko he ŋaa lɛ, esa akɛ akwɛ akɛ, mɛni ji hesɛɛnamɔi loo yelikebuamɔi ni baajɛ nakai gbɛ ni ajɛɔ lɛ mli kɛba.



Mfoniri 1: GCF Hetoi / Gbɛkɔamɔi Kpaanyɔ ni akwɛɔ

Ghana Maŋ Le Jenɔsakemɔ Daɔ ke Gbɛijanɔ Ni Akwɛɔ

Ghana jenɔsakemɔ he akpɔ ni awo ke Ghana’s Nationally Determined Contributions (NDCs) ni ji nibii ni Ghana maŋ le kɛshwie ehie, ake ebaafee kɛwa jenɔ enɔlifeemɔ gbɛijanɔtoo le, nyie ŋɛle kome no ye GCF otii, ni taɔɔ ake aba kɔɔɔɔɔɔ muji nifeemɔi ashi le ahe, ni ebaawo nitsumɔi ahewale, ni eha akutsei ashwere ni kɔɔ jenɔsakemɔi ayibaamɔ hewalɛwoo nifeemɔ le ahe. Enɛ hewɔ le maŋ jenɔsakemɔ akpɔi ke ŋaakɔmɔ nifeemɔi le ke Jenɔ enɔlifeemɔ fotro le kpaɔ gbee.

Mɛni Fotro nɛɛ baaye ebua ye Ghana?

Titri le, GCF fotro le baawa nifeemɔi ke nitsumɔi sɔto:

- ni ke Ghana jenɔsakemɔ akpɔ ni tsɔɔ faŋŋ ake ehie yinɔtoo kɔpakpa kɛha kɔɔɔɔɔɔmujiwoo shibaa nyie.
- ni baawa kɛha ni nɔyaa nitsimɔi otii ni ahie le, anye atsa no ye Ghana.

- ni baawa yaatsamo ye nifeemoi ni baaba mujiwoo nifeemoi ashi, ye hei srtoi keha hesenamoi ye hei srtoi le.
- ni baaha ake hii ke yei ashihelomo gbei atsu nii.
- ni baashe manjiajandaamo gbejianotoo le he keha ni eke akpoi ke gbejianotoi keha wohewon yibaamo ye fotro le naa.

2.0 MAD NITSUMO HE NI AHA LE HEGBE

Maji ni yoo hegbе аke amеnine ashe fotro nee mli shika le eko no ketso Green Climate Fund no le, esa ake ameto Manj Nitsumo He Ni Aha Le Hегbe ni ji National Designated Authority (NDA), ni baafee naawielо eha GCF fotro le ke eman le. Neke National Designated Authority (NDA) nee baatsu nii ake tenjaalo eha eman le ke GCF fotro le, ni ebaagbala nibii ni kamо eman le tsui no ye nifeemoi ni baaba kooyoonmujiwoo shi ni baaha jеj ke kooyoon afee shweshweeshwe ni egbele gbei eha noyaa ke shweremo. Ghana Amralo le ehala Economic Strategy, and Research Division (ESRD) ni yoo Manjoomo nitsumo he ni kwes shikatoo gbejianо, ni ji Ministry of Finance shishi le, ake ame ameye Ghana najian ake mei ni aha ame hegbе loo NDA ni baaye man le najian ye GCF le.

Mei ji Manj Nitsumo ni Aha Ame Hегbe loo NDA nitsumo ye Ghana?

Ye GCF'e gbejianotoo ni akedumo shi, ni tsoo mei ke amenitsumoi anaa le, NDA le nitsumoi enyo potee ni esa ake ametsu ji ake:

- esa akɛ NDA kɛ enine awo gbɛbilɔi ni miitao akɛ aha amɛ odaseyeli gbɛɲmɛɛ ni amɛdiɛntɛ, ni amenine ashɛ fotro lɛ nɔ lɛ agbɛbimɔwoji lɛ ashishi.
- esa akɛ NDA lɛ kɛ enine awo nitsumɔi srɔtoi ni ataoɔ atsu he gbɛbimɔwoji fɛɛ ni abaatsu yɛ Ghana nɛɛ shishi.

Ghana NDA Secretariat ni yɔɔ Ghana nɛɛ, nitsumɔi oti ji akɛ:

- a) Amɛkɛ maɲ, aɲkro aɲkroi, maɲhefalɔi kɛ mɛi fɛɛ ni he saji bajeɔ fotro nɛɛ shishi lɛ ana kpɛɛ, kɛtao nibii ni esa ni anyɛ akɛ fotro nɛɛ mli shika lɛ eko awo mli.** Mɛi ni nibii kɔɔ amɛhe eko lɛ ji amralofoi anitsumɔheɪ, maɲbii akui srɔtoi, maɲ tsuimaamɔ-kɛ-gbɛjɛgbɛi agbalamɔ nitsumɔ heɪ, aɲkro aɲkro nitsumɔ heɪ, akutsei, kui ni amlibii baanyɛ ana nɔ, kɛ yei ni baanyɛ anɔ nɔ kɛjɛ fotro lɛ mli nifeemɔi srɔtoi lɛ amlɪ.

Akɛ enɛmɛi fɛɛ edumɔ shi, yɛ NDA ɲai kɛ mɛi ni nibii kɔɔ amɛhe eko srɔtoi lɛ fɛɛ ahe.

- b) Nɔyaa kɛ Maɲ Nitsumɔi ashweremɔi ahe gbɛjianoɔtoɔ.** NDA baafɛɛ hiɛnyielɔ yɛ maɲnɔyaa kɛ nitsumɔi anɔyɔɔ amlɪ, ni ebaato woji ni kɔɔ jɛɲtsakemɔi ahe gbɛjiano yɛ GCF fotro lɛ he, kɛ nibii ni atonaa akɛ akɛ GCF fotro lɛ mli shika lɛ eko baafɛɛ yɛ maɲ lɛ mli ketiu jɛɲtsakemɔ shweshweeshwe feemɔ sɛɛ.

- c) Kunjii ni ahe awo mli akpojiemɔ ketsoɔ fotro le.**
 NDA bii le baaha maŋ kui, aŋkro aŋkro nitsumɔ hei, ke nitsumɔ hei ni be amralofoi ashishi, ni emamɔ amemɔ mi keha fotro le. Gbeɓimɔwoji srɔtoi ni DAE bii eŋmala kemiiɓibii gbe keha fotro le, esa ake NDA bii le aŋmala woji ameshwie no dani akeya.
- d) Esa ake ametsɔɔ nii, ni akashwie nitsumɔ gbejianɔi ni mei eto toi le ye fotro le he le.** Esa ake NDA le akwe ake nitsumɔi agbei ni kui kui ke mei eto toi le ke maŋ gbejianɔtoo le nyie gbe kome no, ye jentsakemɔi anaamɔmɔ saji ahe, koni akashwie nibii ni kamɔ maŋ tsui no.
- e) Esa ake amefee hienyielɔi ni ametsɔɔ hesaamɔ ke kralo ni afee aha maŋ nitsumɔi ni esa ni ake shika aye abua ye maŋ le mli.** NDA le baanye ana fotro le hesɛɛ amediɛntse loo amehala mei komei keje jakui, maji loo kpokpai, loo aŋkro aŋkroi loo nitsumɔi ni be amralofoi ashishi, ni he ekpɔ jogbaŋŋ, ni amefee kralo ye nifeemɔi amli tamɔ amekpelɔi noŋŋ pɛpɛpɛ.
- f) Bɔ ni abaaka kui nes ni ameye Fotro le mli mlai anɔ jogbaŋŋ.**
 Bɔ ni abaaka kui le ye amɛmlanɔyeli mli, ye koɔɔɔɔŋmujiwoo, mei ahe afabaŋfoo, akpɔi ni koɔ no ni Nitsumɔnokwelɔi kefo shi, ke bɔ ni aketsuo nii ye akutsei komei potɛɛ amli.

Nitsumɔi krokomɛi ni fata NDA Secretariat nitsumɔi le ahe

Kɛfata he le, NDA nitsumɔi ni atsi ta, ni GCF etsɔɔ naa ji, esa ni NDA secretariat le atsu nibii komɛi potɛɛ tamɔ enɛmɛi:

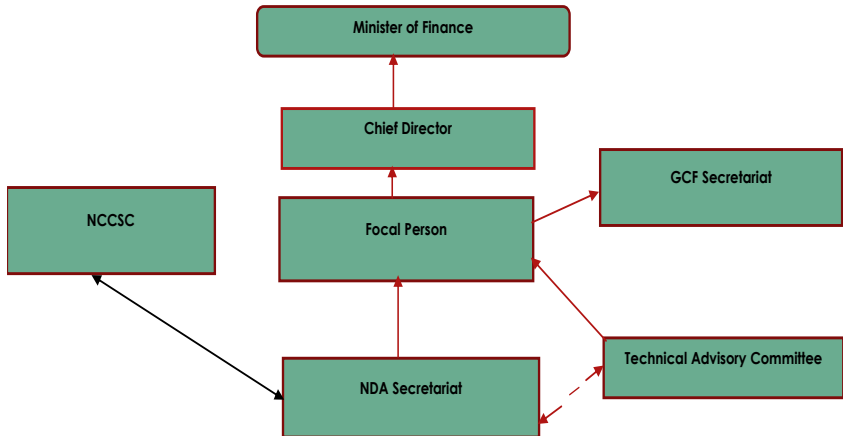
- **Amɛfee Secretariat amɛha kuu ni woɔ nɔ-he-nilee ɲaa - Technical Advisory Committee (TAC).** Esa ake NDA le afee ɲaawolɔi akuu loo Technical Advisory Committee ni baakwe ni atse kpee amɛha hesalɔi ni amɛfee pialɔi amɛha TAC ɲaawolɔi akuu le.
- **Nɔkwɛlɔi.** Secretariat ni yɔɔ NDA le baafɛe nɔkwɛlɔi ye nitsumɔi atsumɔi amlɔi ke gbɛɟianɔtoi anɔkwɛlɔi amɛha kui ni ahe awo mli le, ni amɛkwe ake amɛmiye akpɔi ke mlai ni awo le nɔ pɛpɛɛɛ keha ni shika ni jɛɔ fotro le mli le afee ye Ghana maɲ gbɛɟianɔtoo naa ni kɔɔ nibii otii ni jwɛɛ maɲ le hiɛ le he.
- **Amɛbua akɔntaabuu saji anaa ye nitsumɔi anɔyaa he.** Esa ake NDA abu nibii ke nitsumɔi ni yaa nɔ he akɔntaa ye Fotro le he ye Ghana nɛɛ.
- Esa ake NDA le ke shikabimɔ-woji he saji ni kɔɔ Ghana he fɛɛ ato ni ekudɔ saji-gbɛɛ-ke-shwamɔ ye nitsumɔi ni yaano ahe, ketso adafitswaa gbɛi ke kpaatswaa plamai ni he hiaa anɔ, ni keji ebaahi le, shikwɛɛ wiemɔi hu afata he.

- Esa ake Secretariat le anye ato GCF he saji ni he hiaa, naagbai ni ekekpeo, ke gbei ano ni Fotro le ketsuo nii he saji fee eha maŋ kui ke mei fee ni nibii koo ameha eko le.
- Esa ake Secretariat le asha gbebimo-woji le fee amlɩ klenklen dani ekaha NDATAK le.
- Esa ake secretariat le akudo ni eto gbei ni he baahia fee eha ni kui srɔtoi ke mei fee ni nibii koo ameha eko le fee ale gbei ano ni amebaatsɔ ni akashwie amegbebimo-woji ni amekɛbiɔ shika le.
- Kɛfata hesaamo gbɛjianɔtoi le ahe le, secretariat le ji mei ni esa ake amɛwo maŋ mli nitsumo hei ahewale, ni amɛwo yaatsamo hu mli hewale ye maji le amlɩ ni amele gbɛjiano ni ato ke bo ni esa ni nibii ayale ni akɛfo kooɔɔɔ he afabaŋ, ke mei aterɔ shramo nifeemoi ni baaha maji diɛntse anye ni amenine ashe fotro le mli shikai le eko no ni etsɔɔɔ mo ko nine no.

Bo ni Ghana NDA le Naatoo Yoo Le

Gbei ni ato ke bo ni amro nee ato nibii anaa aha kɛha nitsumo le, baakwe ake abaanye atsa nitsumoi ni atsuo no, ni aba nibii ni afee momo, shi akuɔsee ayafeo ekonɔ le shi, ni tsakpaa kpakpa ko aba nitsumoi atsumoi amlɩ. Bo ni ato NDA naa le baakwe ni ekudo nitsumoi ke kui kui agbɛjianɔtoo no, ni aye bei no aketsu nii, ni ake ŋaa ke gbɛjianɔtoi atsu nii, ni eye ebua NDA le ni enye eshe otii ni

fotro le hie le ahe. Atsoo bo ni naatoo le yoo ye mfoniri ni ji 2 le mli.



Mfoniri ni ji 2: Bo ni Ghana NDA Naatoo le yoo

Kadimo ake: NDA secretariat le baabo mo ni ake hie eka ni aha le hegbɛ le amaniɛ, ni le hu eke amaniɛ le baaha Maɲsoolo ni kwɛɔ shika ke nitsumɔi ahe gbejianɔtoo no le, ketsɔ Onukpa ni Fe fɛɛ le no.

NDA Nitsumɔ Nɔkwɛmɔ Gbei ni ato

Gbei ano ni ato aha NDA le nitsumɔi le, ato gbei nɛɛ ke yɛntoo ake, eke akpɔi ni baakudo nibii, baatsɔo yelikɛbuamɔ gbei, ke ɲai nilee ke hesale ni akɛbaawo nitsumɔi amlɛ kɛha GCF fotro le nifeemɔi. Otii ke gbei ni akɛkudɔo le ji no ni aha ye shishi le.

Maṅsɔɔmɔ Nitsumɔ he ni kwɛɔ Shika kɛ Nitsumɔi Ahe Gbejjanɔtoɔ Nɔ - Maṅ Hegbe Ni Aha Iɛ

Gbene ni kwɛɔ Shikagbejiano he ŋai kɛ Nianɲɛɛmɔi Asaji ni ji The Economic Strategy, and Research Division (ESRD) ni yɔɔ Maṅsɔɔmɔ Nitsumɔ he ni kwɛɔ Shika kɛ Nitsumɔi agbejjanɔtoɔ nɔ Iɛ tsuɔ nii ake Maṅ Nitsumɔ he Ni Aha Iɛ Hegbe keha GCF fotro Iɛ nɔkwɛɔ yɛ Ghana. ESRD nɛɛ Maṅsɔɔmɔ Nitsumɔ he ni kwɛɔ Shika kɛ Nitsumɔi agbejiano nitsumɔ he Iɛ eyɔɔ, ni enyieɔ hie ni ekwɛɔ GCF fotro Iɛ he nitsumɔi fɛɛ yɛ Ghana nɔ, ketsoɔ mɔ ni ake hie eka Iɛ nɔ. Saji kɛ sharamɔi ni he bajeɔ fotro nɛɛ mli ketso DAE's kɛ nitsumɔi atsulɔi fɛɛ aɔ Iɛ, esa ake amɛke amenibii fɛɛ atso NDA Secretariat Iɛ nɔ. Ni NDA nyo ni ake hie eka Iɛ baabo Maṅsɔɔɔ ni kwɛɔ Shika kɛ Nitsumɔi agbejjanɔtoɔi aɔ yɛ GCF Iɛ amanie, ketso Onukpa ni fe fɛɛ Iɛ nɔ.

Hesalɔi Aṅaawolɔi Akwaashɔŋ, mɛi ni esa ni amɛhi mli kɛ amɛnitsumɔi

Hesalɔi Aṅaawolɔi Akwaashɔŋ ni ji Technical Advisory Committee (TAC) Iɛ ji ku ni yɔɔ ŋwɛi fe fɛɛ keha Jɛŋ eɲɔlifeemo Fotro nitsumɔi Iɛ yɛ Ghana. Amɛnitsumɔi ji ake, amɛwo akpɔi ni baakudo NDA Iɛ, ni amɛpia kɛ hesalɔi ṅaawoi, ni amɛke amenine awo woi gbeɔbimɔ-woji ashishi keha fotro Iɛ mli shika taomɔ yɛ maṅ nɛɛ mli.

Mɛi ni yɔɔ TAC Akwaashɔŋ Iɛ mli

TAC akwaashɔŋ Iɛ, kui sɔtoɔi ni nibii kɔɔ amɛhe eko Iɛ ji mɛi ni yɔɔ mli, ni amɛɛinɔtalɔ ji NDA Iɛ. Akwaashɔŋ nɛɛ mɛi nyɔŋma-ke-ekome (11) ni damɔ maṅsɔɔmɔ hei otii komei anajjan ji mɛi ni yɔɔ mli, ni mɛi anaa ni amɛdamɔ Iɛ ji, aṅkro

aṅkro nitsumo hei ke maṅ-nitsumo hei, ni amedamo jentsakemo kui ni ji (representing climate change sectors) naa.

Akwaashoṅ nɛɛ mli bii ɛ ji:

- Maṅsoomo Nitsumo he ni kwɛo Shika ke Nitsumoi agbejiano (Seinotalo)
- Maṅsoomo Nitsumo he ni kwɛo Wɔhewoṅ niaṅ, Jɛshikpamo, Daa ke Nilee ke Tsakemoi ni ji Ministry of Environment, Science, Technology and Innovation (MESTI)
- Maṅ Nitsumo he ni aha amɛ hegbɛ ni ameto Maṅnoyaa he gbejiano, ni ji National Development Planning Commission (NDPC)
- Gbene ni kwɛo nidumo nibii ano ye Maṅsoomo Nitsumo he, ni kwɛo Niyenii ke Okwaayeli saji ano, ni ji Crop Services Directorate of Ministry of Food and Agriculture
- Maṅsoomo Nitsumo he ni kwɛo Yei ke Hii ke Gbekɛbii ke mɛi atɛṅ shramo hebuu saji ano, ni ji Ministry of Gender, Children and Social Protection
- Nitsumo he ni ato ni kwɛo Koo ke Koohai asaji ano, ni ji Forestry Commission
- Nitsumo he ni kwɛo Mu ke Srawahewalɛ nitsumoi ano, ni ji Energy Commission
- Nitsumo he ni kwɛo Wɔhewoṅ Niaṅ he Afabanfoo saji ano, ni ji Environmental Protection Agency (EPA)
- Maṅsoomo Nitsumo he ni kwɛo Maji ke akrowai akwramo ke Noyaa ke shweremo saji ano, ni ji

Ministry of Local Government and Rural Development (MLGRD)

- An̄kro an̄kroi Nitsumɔi akui ni ji Private Enterprise Foundation
- Maŋ Nitsumɔ heɪ akui ni ji Civil Society Organisation

Ni amɛkwɛ akɛ mɛi fɛɛ ni nibii kɔɔ amɛhe eko yɛ maŋ lɛ, fata he, ni NDA lɛ baafɔ nine kɛkpee maji amlɪ bii, yɛi, kɛ kui loo mɛi ni atsi amɛ ato sɛɛ fɛɛ ni kɛ ebaahi lɛ, amɛfata he.

TAC Nitsumɔi kɛ Egbɛnaa

TAC lɛ ji mɛi woɔ akpɔi ni kudɔɔ, ni eyɛɔ ebuaa, ni egbeleɔ gbɛi ehaa ni anyɛ akɛ shika awo jɛŋtsakemɔ nifeemɔi amlɪ, titri lɛ, nibii ni kɔɔ GCF fotro lɛ he. TAC toɔ ŋai kɛ gbɛjianoɔ ni amɛkɛ Amralo kɛ kui ni bɛ amralofoi ashishi kɛ an̄kro an̄kro nitsumɔ heɪ kɛ kui naa shramɔ ketɔɔ gbɛjianoɔ amɛhaa shika kɛ nifeemɔi ahe gbɛjianoɔ yɛ Ghana. Amɛnitsumɔ gbɛjianoɔtoɔ ni akɛdumɔ shi ni tsɔɔ amɛgbɛnaa kɛ nitsumɔi lɛ ekomɛi ji akɛ:

- a. Amɛbaakwɛ ni amɛkudɔ ni aye akpɔi ni NDA lɛ ewo lɛ anɔ, ni amɛkwɛ ni nitaomɔnii ni ka yɛ maŋ nitsumɔi kɛ gbeneɪ amlɪ yɛ jɛŋtsakemɔ gbɛjianoɔtoɔi ni akɛ shika woɔ mli srɔtoɔi lɛ ayanoɔ.
- b. Amɛbaakudɔ ni amɛtsɔɔ ŋai gbɛi srɔtoɔi anɔ ni maŋbii kɛ shian̄bii kɛ maji maji baatsɔ ni amɛkɛgbɔ nifeemɔi ni woɔ kɔɔyɔɔŋ muji lɛ nɔ yɛ Ghana.
- c. Amɛkwɛ ni aka nibii ni atsu tsui, ni amɛwo woi ŋai yɛ gbɛbimɔ-woji ni akɛtaoɔ shika kɛjɛ fotro lɛ mli ketso NDA lɛ nɔ lɛ ahe ŋaa yɛ kui lɛ amlɪ.

- d. Amɛbaakwɛ ni amɛwa maɲsɔɔmɔ nitsumɔ hei ni he hiaa ye nibii srɔtoi amlɛ'ɛ ni amɛnye amɛkɛ amɛhe awo nifeemɔi kɛ hei ni ato aha GCF fotro ni he hiaa kɛ akpɔi kɛ ɲai srɔtoi lɛ amlɛ.
- e. Amɛkwɛ ni amɛwa ni aje gbɛi aha akpɔwoi kɛ kui anifeemɔi atsakemɔ ni baaha nɔyaa kɛ shweremɔ ni baawo akutsɔɲbii ahewalɛ, ni baaha aye akpɔi ano ni nifeemɔi baaye ebua ni esaa akutsei kɛ kui ni ashi afɔshi ni afeko lɛ.
- f. Amɛbaakwɛ ni amɛwo yaatsamɔ hewalɛ ye kui kɛ nitsumɔ hei ni nibii kɔɔ amɛhe eko lɛ atɛɲ.

National Climate Change Steering Committee

Maɲ Jɛɲtsɛkemɔ Kudɔmɔ Ku, ni ji National Climate Change Steering Committee (NCCSC) lɛ ji maɲsɔɔmɔ nitsumɔ hei atɛɲ ku ko, ni ato koni ekwɛ ni ekudɔ gbɛi ano ni atsuo jɛɲtsakemɔ he nitsumɔi kɛ nifeemɔi ye Ghana. NCCSC lɛ, mɛi ashwuɔ nɔ ni amɛta lɛ ji MESTI. Nɛkɛ akwashɔɲɲ nɛɛ, mɛi ni yɔɔ mli ji maɲsɔɔmɔ nitsumɔ hei ni nibii kɔɔ amɛhe eko lɛ anaadaalɔi, universitibii, nianɲpɛɛmɔ nitsumɔ hei, aɲkro aɲkro nitsumɔ hei akui, kɛ nitsumɔ hei ni bɛ amralɔfoi ashishi ni ji NGOs lɛ, ni aha amɛ hegbe ye maɲsɔɔmɔ nitsumɔ hewalɛ naa. Nakai nɔɲɲ ji TAC hu, ni enitsumɔ ji ake amɛkwɛ akpɔi akudɔmɔ ni amɛye amɛbua ye gbɛtsɔɔmɔi amlɛ, ni NCCSC bii lɛ yeɔbuaa NDA lɛ, kɛ nilee kɛ hesalɛ ɲaawoi srɔtoi. NCCC bii lɛ agbenaa ji ake amɛkwɛ ni amɛsaa akpɔi ni yɔɔ lɛ, ni amɛto gbɛjjanɔ amɛha ekɛnitsumɔ, ni akɛwo maɲ tsuishwee nii lɛ obɔ. Jɛ NCCSC bii anitsumɔ oti ni he hiaa waa hewɔ lɛ, esa ake NDA bii lɛ

abɔ amɛ amaniɛ yɛ nifeemɔi sɔtoɪ fɛɛ ni etee nɔ he, ni kɔɔ GCF fotro lɛ he.

NDA Kɛ kui krokomɛi kɛ Mɛi ni nibii kɔɔ amɛhe ayaatsamɔ

Jɛŋ Enɔlɪfeemɔ Fotro lɛ pɪaa maji ni shɛko hiɛ tso lɛ, ni tsoɔ akɛ amɛwaa jogbanɔ yɛ nɛkɛ maji nɛɛ agbɛi anɔ kɛtaoɔ amɛshweremɔ kɛ amɛnɔyaa yɛ amɛmajɪ lɛ amli. Mɛi kɛ akutsei ni yɔɔ maji nɛɛ anɔ ni nine baashe GCF fotro lɛ mli shika lɛ eko nɔ lɛ, esa akɛ amɛgbee naa awa ni eshe shɔŋ yɛ he ni maŋ lɛ yaa yɛ enɔyaa kɛ eshweremɔ mli, yɛ amɛnifeemɔi kɛ amɛhehiamɔ nibii ahewɔ.

Yɛ enɛmɛi amli lɛ, mɛi fɛɛ ni he hɪaa yɛ jɛŋtsakemɔ shika saji amli tamɔ amralo, aŋkro aŋkro nitsumɔ hei, akutsei ni baana hesɛɛ, nitsumɔ hei ni bɛ amralofoi ashishi, fɛɛ kɛ amɛhe baawo GCF gbɛjianɔtoɔ lɛ mli jogbanɔ, kɛtso mɛi ni nibii kɔɔ amɛhe eko yɛ kui sɔtoɪ amli lɛ kɛ ŋaawoo taomɔ koni wobatsomɔ notsɛmɛi. Nɛkɛ notsetsomɔ nɛɛ baanyɛ aba mli kɛji GCF fotro lɛ mli gbɛjiano kɛ ŋɛlɛi kɛ nitsumɔ kɛ hesalɛ fɛɛ miitsu nii jogbanɔ.

3.0 KUI NI AHE AMƐ AWO MLI KƐ GBƐ NŌ NI ATƐƐŌ AKƐHEŌ MƐI AWOŌ MLI

Kui Ni Ahe AmƐ Awo Mli

GCF tsuuu nitsumɔi ƙe, ƙe diɛntse, shi maɗ etsuo nii ketsɔo yaatsamo no, ketsɔo Kui ni ahe amƐ awo mli ano. Kui ni ahe amƐ awo mli ƙe baanyɛ afee aɗkro aɗkro nitsumɔ hei, maɗ nitsumɔ hei, nitsumɔi ni be amralfoi ashishi, maɗ gbene ko, maɗ muu, kpokpa Jaku ko, loo maji maji akui ni ayiɗtoi yɔo faɗɗ yɛ jɛɗtsakemɔi nitsumɔi kɛ nifeemɔi amlɪ ni akɛha GCF ƙe. Esa akɛ nekɛ kui nɛɛ anifeemɔi ƙe kɛ GCF gbɛjianɔtoi kɛ gbekpamɔi ƙe ako pɛpɛɛɛ, yɛ shika gbɛi ano, hewoɗ niaɗ kɛ he-afabaɗfoo gbɛi ano, ni eke yei kɛ hii hu asaji ako. Kui ni ahe amƐ awo mli ƙe too shika gbɛbimo-woji ahe gbɛjiano, in amefeo ene ketsɔo sharamɔ ni mliwa ni ka amƐ kɛ NDA'ɛ teɗ ƙe no, loo ketsɔo mo ni akɛ hie eka eno ƙe no, yɛ nibii srɔtoi ni jwere jɛɗtsakemo gbɛjianɔtoo ni yɔo maji maji ni shɛko hie tso ƙe amlɪ. Esa akɛ Kui ni aheko amƐ awoko mli ƙe kɛ kui ni ahe awo mli ƙe afee ekome kɛji amɛkɛ shika gbɛbimo-woji miiba GCF ƙe kɛha mlikwemo.

Mɛni GCF Kui Ahemo kɛ mliwoo ji?

Ku hemo-ke-mliwoo ji gbɛ no ni kui tsoɗɗo no ni ameketsɔo akɛ ameyetsitsi kɛ hewale ni amɛbaanye amɛkɛkwe shika nibii ni akɛbaaha amƐ kɛ nitsumɔ no, yɛ gbɛi kɛ akpɔi ano ni ato yɛ fotro shika ƙe he. Kɛji onine baashe GCF Fotro ƙe mli shika ƙe eko no bo diɛntse ƙe, esa akɛ NDA ƙe ayɔse bo ni ehala bo akɛ maɗ ku.

Keji ku ko nine baashe shika no keje GCF Fotro le mli le, esa ake NDA le ayose nakai ku le, ni ehala nakai ku le ake man ku ni abaanye Aha le Fotro Shika le, ni etsoo mo kroko nine no, ni ji Direct Access Entities (DAEs). Keji mo ko nine baashe Fotro le mli shika le eko no le, GCF hianaanomei baakwe ogbebimo-woji amla, ni amekwe ake mo ni tao nakai shika le eshe GCF otii ke gbekpamoi ni akeshwie shi le he, ni eto ehewon ke mei ashweshweeshwe feemo he gbajian bo ni akpaa gbeyeyei ke hii akpawoo le he.

Namo Yoo Hegbe Ake Ebia Gbe ni Ahe Le Awo DAE Mli?

GCF Fotro le mli shika le baaya kui ni ahe ame awo mli, ni ji Accredited Entities (AEs) le dientsa adon ni etsoo mo kroko ko kwraa don, ye amenitsumoi ke gbajiantoi srtoi le anaa.

Ku fee ku, ni ji man kui, ankro ankroi ke NGOs ni yoo Ghana fee ye hegbe ni ameke amegbebimo-wolo bio gbe ketao ni ahe ame awo mli ake DAE. Neke ku nee esa ake efee:

- a) Ku ni ato ye mla naa ni eye Ghana.
- b) Esa ake ametsoo fanja ake amemashi jogbanja ye amekpoi ke amegbajiantoi ke gbetsoomoi anaa.
- c) Amenyee ametsoo fanja ake ameye tsitsi ke kpian hewale ye nibii ni amenye amefee momo, tam nibii ni amatao amefee le eko pɛpɛɛɛ.

Kefata he le, DAE kui le fee le, esa ake amenye ameshe gbajiantoi, ke akpoi ni koo wɔhewonjanja, ke mei ashweshweeshwefeemo, ke yei ke hii ahe akpoi le he, bo ni anjala le ye nitsumo tsumo akpawoo ke gbetsoomo woji le

amli le, ye GCF nokweli agbejianotoo le naa keha shikahamo le, perepere.

Te Kui feo tɛnɛ ni Amɛbiɔ Shika ni Tsɔɔ Mɔ Kroko Dɛn hu?

Ake onine baashe shika no bo diɛntse le, ji oti kome ko ni he hiaa Jerɛ Enɔlifeemo Fotro le jogbanɛ. Etsɔ ake maɛ ni nine baashe Fotro le shika le eko no le, baanye ehala ku ko, ni ye he-nilee ake maɛ najianɔdaalo loo ku ni ye maɛ ko shishi tamɔ (Maɛ nitsumo he, aɛkro aɛkro, loo ku ni be amralofoi ashishi) ni baanye enine ashe GCF Fotro shika le eko no ni etsɔɔ mɔ kroko nine no.

Ake oke ohe baawo NDA nifeemoi amli mra le ji hewalewo ni awoo mɔ fee mɔ. Kui ni taoo amenine ashe shika no, ni ekatsɔ mɔ ko mɔ ko dɛnɛ le, esa ake ametsɔ gbei nee ano:

1. Amɛko Nomimaa wolo keje Nationally Designated Authority (NDA) le dɛn.
2. Amɛna Kraano Hegbehamo Gbejianotoo, ni ji Online Accreditation System (OAS) keje GCF le dɛn.
3. Etsɔ gbeɛbimo gbejianotoo no, bo ni GCF halamo gbejianotoo le kashi eha ye nakai jele no perepere.
4. Esa ni ku le ke egbeɛbimo-wolo ayaha ni ewo he nyomo ni awoo, ni ji (fee) le perepere.
5. Enye eha GCF sanebimo ni abi le fee aheto ye klenklen jele le no (Stage I) ke jele ni ji enyo le (Stage II) hu.

6. Kεji aηj nσ aha λε λε, eke enine baawo Gbeekpaamo wulu ni ji Accreditation Master Agreement (“AMA”) λε shishi.

Ehe ehia akε ahe Maη Nitsumσ hei ke kui awo GCF λε mli ketsoσ akε amεbaana nibii ni akpaa gbε ye Table 2 λε mli, ni esa akε NDA λε aha nakai ku λε. Maη kui ni ahemσ-ke-mliwoo yσ gbε nσ, ni amεdiεηtse amεnine baanyε ashe shika λε eko nσ, ni etsσσ mσ kroko ko dεη λε baawa ni: (i) Ewo Maη kui ahewalε; (ii) atswa maη λε notsetsomσ ke shika he akσtaabuu jogbaηη amashi; (iii) baaha akadi gbεjianσtoi ke nifeemσi; (iv) baaha ayσse kui λε ye jεη maji atεη; ni (v), ebaaha hegbe ni akε GCF fotro λε sharamσ diεηtse amashi fe akε akεbaatsσ mσ kroko nine nσ.

Najianyeli Gbεkpamσi: Enεmei ji gbεkpamσi ni akεshwieshi ye fotro shika λε nσkwεmσ mli. Gbe ni akpaa ye Najianyeli naa ji akε, anyε abu shikai ni ba mli ke bσ ni eje mli ketee he akσtaa kpakpa, abσ he amaniε, ni akεtsu nii ye anσkwayeli ni ye faηη mli, ye akpσi ke mlai ni akεdumσ shi λε anaa, ye akσntaabuu kpakpa mli; ni akwε saji ni abua naa ye kui ahe, nibii ni yσ, bσ ni nibii λε yσ jogbaηη ni abaanyε ashwa afσ nσ, ke bσ ni enaagbee baatamσ afee faηη. Bσ ni atsu nii aha ni tsoσ akε ale nσ ni amεtsuσ, ni amεtsσ amεhesale ke nσ ni amεnyε amεfee. Agbεnε hu GCF gbεkpamσ ji akε kui anifeemσi afee faηη ni amεnyε amεbu akσntaa kpakpa ni anyε abu nibii ahe akσntaa kpakpa ni teσ shi eshiσ nii nσ ni akwεεε jogbaηη, juu ke fσ, nibii ahie kpatamσ, ni ajie niifσji ni meι juσshi amεfeo fεε kpσ, ni akε

gbɛjianɔtoo kɛ kudɔmɔ mlai, kɛ akpoi kɛ kusumi ni baaha no fɛɛ no afee fanɲ ni abu akɔntaa kpakpa atsu nii.

Gbɛnɔ Ni Atsɔɔ Aheɔ Mɔ Awoɔ Mli

Ku ni miitao akɛ ahe lɛ awo mli lɛ, esa ni ekɛ gbɛbimɔ-wolo ni aha emli saji fɛɛ ahetoo ayaha, kɛtsɔ GCF online kpaa gbɛjianɔtoo nɔ, ni ena nɔmimaa ni ji fit-for-purpose accreditation approach keɲɛ Green Climate Fund lɛ dɛɲ. Maɲnajanɲyɛlɔ, Maɲ, anɲkro anɲkroi kɛ mɛi fɛɛ ni biɔ gbɛ ni ahe amɛ awo mli lɛ, ehe ehia ni amɛna jiɛmɔ-kɛ-hamɔ wolo ni ji nomination letter keɲɛ National Designated Authority ko dɛɲ efata egbɛbimɔ-wolo lɛ he, kɛha ni ahe lɛ awo mli. GCF lɛ heɔ gbɛbimɔ wolo be fɛɛ be. Abɛ be ko pɔtɛɛ ni ato akɛ akpa hemɔ-kɛ-mliwoo-wolo hemɔ. Ghana ema eyinaashi akɛ ebaanyɛ gbɛnɔ ni national accreditation gbɛjianɔtoo lɛ yɔɔ ye GCF' gbɛjianɔtoo lɛ naa. Esa akɛ kui fɛɛ atsɔɔ akɛ amɛmiisumɔ loo NDA lɛ baafɔ nine etɛɛ kui ni miishi mple akɛ ahe amɛ awo mli akɛ DAE bii. Dɛlɛi ejwɛ yɔɔ:

1. Kui ni miisumɔ / Kui ni Maɲ efo amɛ nine kɛtsɛ amɛ
2. Kpaa nɔ loo Online gbɛbimɔ ni akɛbaa
3. Mɔhemɔ-kɛ-mliwoo mlikwɛmɔ
4. Mla gbɛi ni ato

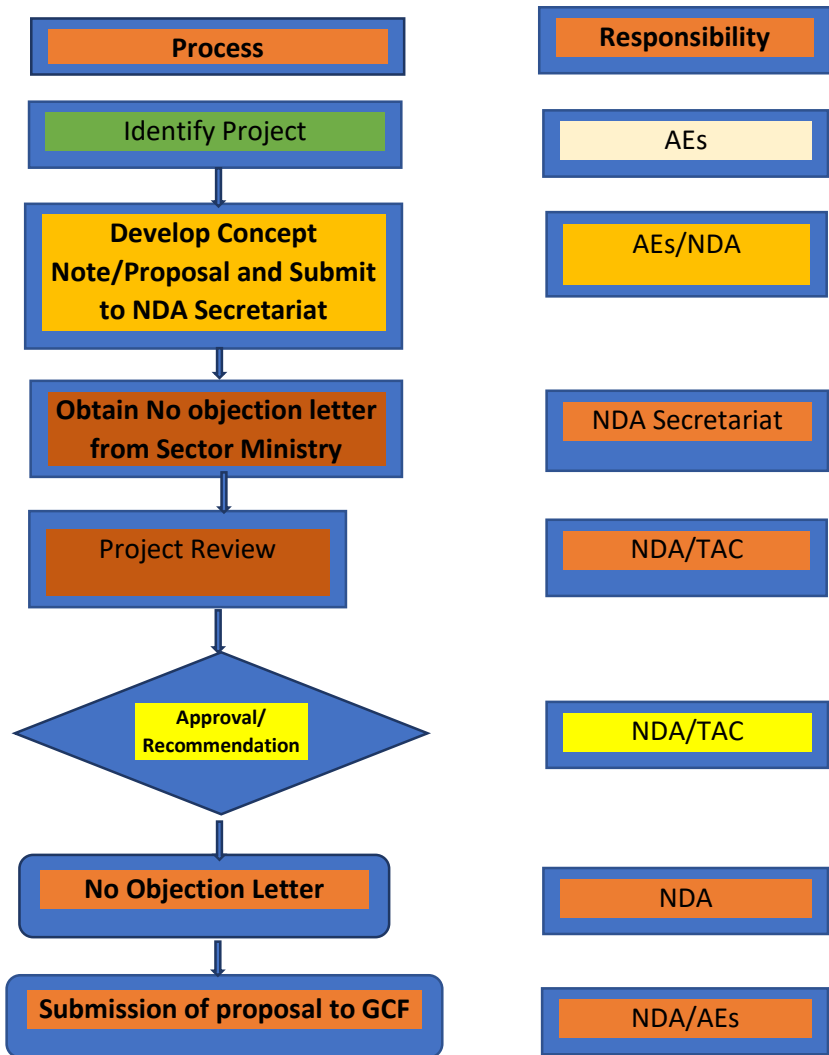
Hemɔ-kɛ-mliwoo he-kaa (Accreditation self-assessment)

GCF efee he-kaa yeli-kɛ-buamɔ nɔ, ni ji Self-Assessment Tool, koni no aye abua ni kui akafite be kɛ shika keɲɛ shishijee akɛ amɛshɛɔ GCF hemɔkɛmliwoo ɲɛlɛ nɔ lo. Onine baanyɛ ashɛ he-kaa yeli-kɛ-buamɔ nɔ loo Self-

Assessment Tool le no keje
<https://www.greenclimate.fund/accreditation/self-assessment>

4.0 BƆ NI OBAAFEE NI ONINE ASHE GCF FOTRO SHIKA LE EKO NƆ

Direct Access Entities ni ji mɛi ni nine baanyɛ ashɛ Fotro lɛ shika lɛ eko nɔ amɛdiɛntɛ lɛ atso gbɛ ni yɔɔ mɛlɛo nɔ, ni amɛkɛ amɛbimɔ-wolo lɛ ayaha GCF ketao Fotro shika lɛ eko yɛ Ghana.



Mfoniri 5: D̄lei an̄ ni Ats̄w̄ Ak̄ Shika Woc̄ Fotro Gb̄ebim̄ l̄ Mli

GCF Fotro le Susumo No

GCF le piala nitsumo tsumo ke gbejianotoi ni:

- Ke shweremo nyie,
- Taoo tsakemo ye bo ni afeo nibii ahaa mli,
- Gbeleo gbeyi ehaa nifeemo ni baahi shi ni ana hesese,
- Moo naagbai anaa ni ke hesesenamoi bahaa manj ni nineshoo no le,
- Ke manj notsetsomo nifeemoi baa, ni agbene hu
- Ehaa shikashidaamo feo jogbanj.

ATEEE-SHI-ASHIII SHIKA YELIK&BUAMO BIM&WOJI

Ateee-shi-ashiii ji nokpalemoo akpo ko ni NDA le kefoshi eha bim&woji fee ni ak&baboo kemiitao Fotro le mli shika. Oti ni yoo atee-shi-ashiii gbejianotoo nee see ji ake, eha nifeemoi anotsamo ni tsakeee ayano ye manj gbe&bim&woji amla, ni ato naj ke gbejianoi ke nifeemoi ni baaha manj aya ehie, ni ewo manj nifeemoi ke ankro ankro nifeemoi amla hewale ketsoo fotro shika le no.

Otii ni Ateee-Shi-Ashiii Le Hie

Ateee-Shi-Ashiii le ye keha otii enyo titri komoi, nomei ji ake:

- ebo modonj ake ebaaha gbejianotoi ke nitsumoi atsumo ni atsuo ye Ghana le ke noyaa ke shweremo otii ni manj le hie le anyie, ni agbene hu,
- ebo modonj ake ebaaha mei ni yoo Ghana, titri le, mei potee komoi ke akutsei komoi potee komoi ana GCF

fotro nitsumɔi ɛ ahesɛɛ, loo amɛnyɛ amɛkɛɛ akɛ amɛsumɔɔɔ nakai nitsumɔi atsumɔ loo nɔ ko feemɔ.

Ateee-Shi-Ashiii Kɛmɔ yɛ Fotro Shika Bimɔ-Woji Amli

Akɛ Ateee-shi-ashiii ɛ afata nibii ni akɛbiɔ Fotro ɛ mli shika ɛ he ni akɛha GCF Secretariat ɛ, kɛji aatao shika ɛ eko. NDA ɛ ji naadaalo ni baakwɛ akɛ aɲɔ GCF nitsumɔ ko nɔ, ni aha ɛ GCF fotro ɛ shika ɛ eko kɛha nitsumɔ. Koni maɲ ɛ diɛɲtsɛ atso nɔtɛ, ni Fotro ɛ nɔkwɛbi nukpai ni ji Board ɛ baɲɔ fotro shikataomɔ nɔ kɛji wolo ni aɲma ɛ jogbanɲ ni ehie Ateee-shi-ashiii ni akɛ nine ewo shishi kɛje NDA najianɲɛlo dɛɲ yɛ Fotro ɛ gbɛtsɔomɔ kɛ bo ni ato ɛ naa.

Kɛji aleeɛ nɔ ebale akɛ bimɔ-wolo ko ni akɛbiɔ fotro ɛ mli shika ɛ ehieɛ wolo ni aɲma ni tɔɔ Ateee-shi-ashiii ko fata he ɛ, no ɛ Secretariat ɛ baawo NDA ɛ toi nɔ loo ebaaha mɔ ni akwɛɔ ɛ ale akɛ atsuɲ nakai bimɔ-wolo ɛ he nii ni akɛyahaɲ nɔkwɛbi nukpai ni ji Board ɛ ni amɛkwɛ mli, beja NDA ɛ loo Mɔ ni akwɛɔ ɛ diɛɲtsɛ eha ateee-shi-ashiii wolo. NDA ɛ baaha Ateee-shi-Ashiii yɛ gbii 30 mli, kɛbaaje be ni enineshɛ nɛkɛ toinɔwomɔ ɛ sɛɛ. Kɛji gbii 30 ɛ ho ɛ, abaatsi nakai gbɛbimɔ-wolo ɛ ato sɛɛ, ni Secretariat ɛ baawo AE/intermediary ni ji AE naadaalo ɛ toi nɔ. Ateee-shi-Ashiii kɛmɔ ni NDA loo mɔ ni akwɛɔ ɛ kɛbaaha,ni baadamɔ gbɛtsɔomɔ ni aha ɛ nɔ ɛ, shishitsɔomɔ ji akɛ:

- (a) Amralo ɛ eteee shi eshiii bimɔ-wolo ni akɛbiɔ fotro ɛ mli shika ɛ;
- (b) Bimɔ-wolo ni akɛba ɛ ja, ni eyɛ maɲ gbɛjianɔtoo kɛ ɲai kɛ gbɛi aɲɔ ni ato akɛ nibii baaya ɛ naa pɛpɛpɛ; ni

(c) Bimɔ-wolo ni akɛba ɛ hu kɛ maŋ mlai kɛ akpɔi ɛ nyiɛ, yɛ bɔ ni ato aha wɔhewɔŋ niaŋ kɛ he-afabafoo nibii nifeemɔi amlɪ.

Ateee-Shi-Ashiii Gbejianɔtoo ni Tsuo nii

Koni Ateee-Shi-Ashiii gbejianɔtoi anyɛ atsu nii ɛ, NDA srɔtoi ɛ baakwɛ akɛ bimɔ-wolo fɛɛ bimɔ-wolo ko ni akɛbiɔ GCF nifeemɔ ko yɛ amɛmaji anɔ ɛ hiɛ nibii ni akɛshwiɛ shi afata GCF fotro gbetsɔɔmɔi ɛ ahe ɛ fɛɛ, koni no aha enyɛ eyashe GCF nɔkwɛbi ni ji Board ɛ ŋɔɔ kɛha ehe nitsumɔ kɛ nɔkplɛmɔ:

Abaakwɛ akɛ aye efɛɛ nɔ ko fɔŋ loo do-no-harm akpɔi ɛ nɔ. Nitsumɔ fɛɛ ni abaatsu ɛ, esaaa akɛ ekɛ naagba hee ko baa, loo ekɛ sɛɛgbalamɔ ko, loo naagba ko bahaa wɔhewɔŋ nibii, loo efiteɔ nibii, loo etsiɔ nɔyaa kɛ shweremɔ ko naa, loo efiteɔ nitsumɔi, loo ekɛ walɛ ko bahaa akutson bii, loo ekɛ nɔ fɔŋ ko baa.

Gbejianɔtoo nɔyeli. Esa akɛ NDAs ɛ akwɛ akɛ nitsumɔi ni atsuɔ ɛ, aaye akpɔi kɛ mlai fɛɛ anɔ, ni baaha mɛi afɛɛ shweshweeshwe ni aafɛɛ yɛ toinɔɔlɛ gbɛi anɔ ni shika nɔkwɛmɔ kpakpa kɛ nɔyeli kpakpa yɛ mɛi ni damɔ naa ɛ amlɪ, kɛji eba mli nakai.

Nibii yɛ Fanɔŋ ni adafitswaa hu yɛ kɛha ni ale nɔ ni yaa nɔ. Esa akɛ NDAs ɛ afɛɛ nibii bɔ ni afɛɛ ɛ yɛ jɛlɛ hei fɛɛ, ni yɛ fanɔŋ kɛ bɔ ni baaha akpɔi ni haa mɛi anineshɛɔ adafitswaa nɔ ni baaha ale nibii ni yaa nɔ, tamɔ nitsumɔi

atsumɔi ni mei damɔ shikahamɔ fotroi anaa. Adafitswaa yɛ nitsumɔi atsumɔ kɛ nifeemɔi ahe aje kpo fanɲ yɛ be ni sa mli, ketso adafitswaa hei ni ale jogbanɲ, ni anɲmala loo atso shikwɛɛ kɛ wiemɔi srɔtoi amlɪ aha mei fɛɛ ni nakai nifeemɔi lɛ baasa amɛhe yɛ gbɛ ko nɔ lɛ ale.

Amlalofoi anitsumɔi srɔtoi ahe kɛ mliwoo. NDA nitsumɔi lɛ esaaa akɛ akɛwaa maji ni NDA yɔɔ amɛmli pɛ. Nɔkwɛmɔ nɔ ji akɛ, maɲsoomɔ nitsumɔ hei kɛ nitsumɔi ni tiuɔ nɔyaa kɛ shweremɔ sɛɛ, kɛ nitsumɔi ni kwɛɔ jɛɲtsakemɔi anɔ yɛ maji maji amlɪ, kɛ amrlofoi anitsumɔ hei kɛ kui fɛɛ hu kɛ amɛnibimɔ nii srɔtoi aba kɛha nitsumɔi.

Mei fɛɛ ni nibii kɔɔ amɛhe aɲaawoi kɛ he-kɛ-mliwoo. Maɲbii aɲaawoi ataomɔ yɛ bɔ ni afeɔ lɛ yɛ jɛlɛ hei hei fɛɛ, kɛ kui ahe-kɛ-mliwoo, kɛ mei babaoɔ asusumɔi atsu nii, ni ajje nibii ni akɛtɛɔ loo atsimɔɔ nɔ fɛɛ kɛje mli. Esa akɛ aɲmɛ mei ni nibii kɔɔ amɛhe eko gbɛ ni amɛkɛ amɛhe awo nibii feemɔi amlɪ, aha amɛle yɛ bei ni sa mli, ni aha Mei ni nibii srɔtoi kɔɔ amɛhe eko ni ji Multi-Stakeholder Engagement Strategy (MSES) ahe abaje NDA nibii afeemɔ amlɪ.

Mlai agbɛkpamɔ. Nitsumɔi ni atsuɔ lɛ esa akɛ aka amɛ akwɛ akɛ, amɛmiiya nɔ bɔ ni akpaa gbɛ yɛ maɲ mla kɛ jɛɲ jɛɲ gbɛɲjanɔtoo mlai anaa lo. Tamɔ, jeeɛ enɛ pɛ, moɲ nianɲjiemɔ ni tɛɔ shi eshiɔ yei, gbɛɛkpamɔi ni aba yɛ hei srɔtoi tamɔ, Stockholm Convention, ni ji gbɛɛkpamɔ ni aba yɛ Stockhlom kpee wulu ni afee ni tsoɔ wies eshiɔ nibii ni fiteɔ adebɔɔ nibii lɛ, Basel Ban ni ji gbɛɛkpamɔ ni aba yɛ Basel kpee wulu ni atɛɛ ni kɛɔ akɛ, akɛ jwɛi loo nibii ni he

be sɛɛnamɔ loo nibii ni yeɔ adeboɔ wala nibii awui ko akajɛ maji ni etee hie anɔ ni ayatsi awo maji ni shɛko hie amli lɛ, kɛ kpee wulu ni atee ye Rotterdam ni ji Rotterdam Convention ni tsoɔ akpɔi kɛ gbɛjiano ni esa akɛ atso ye tsofai ni ebɔɔ yoo amɛmli ahe lɛ, kɛ gbɛekpaamɔi ye kpee wulu ni ji Convention on Biological Diversity ni koo adeboɔ nibii ahe lɛ fɛɛ.

Yei kɛ Hii Akpɔi

Naagbai ni jɛɛtsakemɔi kɛbaa saa hii kɛ yei fɛɛ ahe. Yei ji mei ni nɛkɛmɛi jɛɛtsakemɔi naagbai nɛɛ nyɛɔ eninaa titri. Jɛɛ Enɔɔlifeemɔ Fotro nɛɛ ato koni ebɔ mɔɔɔɔn akɛ abaajara nibii ni akɛbaamɔmɔ naagbai kɛ haomɔi ni jɛɔ enɛmɛi amli lɛ anaa lɛ afee pɛpɛɛɛ aha hii kɛ yei fɛɛ, ni akɛwo yei ahewalɛ hu. Nitsumɔi kɛ gbɛjianoɔtoo nifeemɔi akwɛ akɛ amɛbaasa naagbai ni jɛɛtsakemɔi kɛbaa lɛ anaa ye yei kɛ hii atɛɛ, ni eha hiɛyaa kɛ naagbai anaamɔmɔ aba aha gbɛi anɔ ni akɛbaatsake nibii, ni afee kralo be fɛɛ be. GCF kɛ ehie eka fotro shikai ni baapia yei ye jɛɛtsakemɔi anifeemɔi ni amɛnye amɛwo amɛhe nɔ kɛje nibii ni nyɛɔ amɛnɔ kɛbaashi, jɛ jɛɛtsakemɔi ye hei ni yei kɛ hii be ɛɛlɛ kome nɔ ye lɛ hewɔ lɛ.